



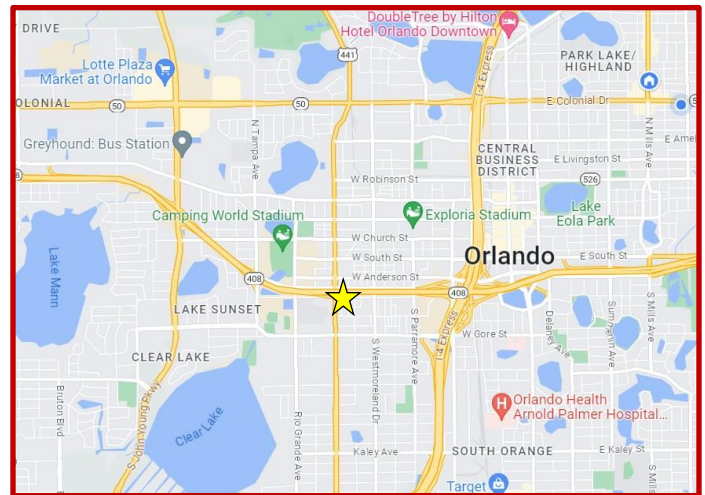
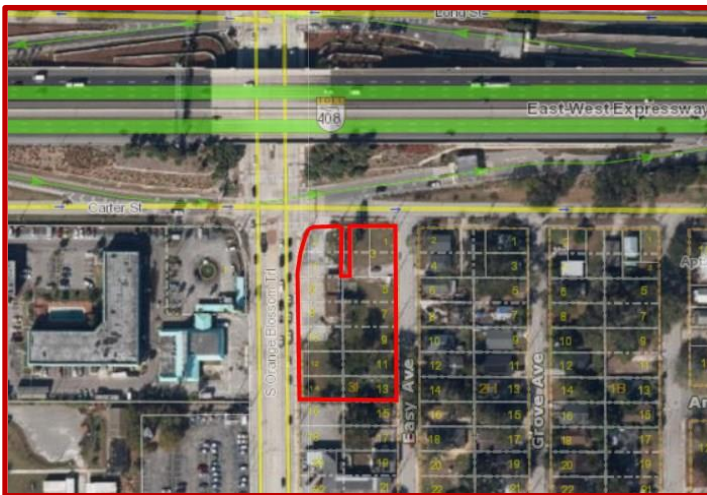
C. Brenner, Inc.

3586 Aloma Ave Suite 5
Winter Park, FL 32792
Phone: (407) 677-1700

COMMERCIAL REAL ESTATE

1+/- Acre Highway Frontage For Sale Downtown Orlando

707 S Orange Blossom Trail, Orlando, FL 32805



- Prime development opportunity in a growing Downtown Orlando market
- 8 parcels assembled for a total of 1.04 acres
- AC-1 zoning allows most commercial uses, such as retail, QSR, and multifamily
- Corner lot can accommodate multiple points of ingress/egress
- Adjacent to entry and exit ramp to HWY 408
- Close to 100,000 vpd traffic count between Orange Blossom Tr and HWY 408
- Near Camping World Stadium, Orlando City Soccer Stadium, Amway Center, and Orlando Sports & Entertainment District
- Asking \$1,499,000, bring all qualified offers
- Property is in state environmental cleanup program
- Billboard site is not included in the sale

Ben Brenner
Lic. RE Broker
C. Brenner Inc.

Cell: 407-970-6447
Office: 407-677-1700
Email: bbrenner@cbrenner.com

Expect Results with C Brenner Inc!

www.cbrenner.com