

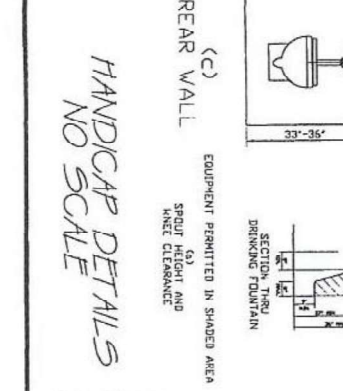
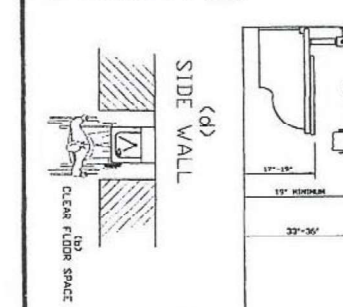
### WIND DESIGN INFO

WIND SPEED	WIND PRESSURE
79	0.18
84	0.23
89	0.29
94	0.35
99	0.42
104	0.50
109	0.58
114	0.67
119	0.77
124	0.88
129	1.00
134	1.13
139	1.27
144	1.42
149	1.58
154	1.75
159	1.94
164	2.14
169	2.36
174	2.60
179	2.86
184	3.14
189	3.44
194	3.77
199	4.13
204	4.52
209	4.94
214	5.40
219	5.90
224	6.44
229	7.02
234	7.65
239	8.33
244	9.06
249	9.84
254	10.68
259	11.57
264	12.52
269	13.53
274	14.61
279	15.76
284	16.98
289	18.28
294	19.65
299	21.10
304	22.63
309	24.24
314	25.93
319	27.71
324	29.58
329	31.54
334	33.60
339	35.76
344	38.03
349	40.51
354	43.10
359	45.81
364	48.64
369	51.59
374	54.67
379	57.88
384	61.23
389	64.73
394	68.38
399	72.19
404	76.16
409	80.30
414	84.61
419	89.10
424	93.77
429	98.63
434	103.67
439	108.90
444	114.33
449	120.00
454	125.92
459	132.00
464	138.34
469	144.95
474	151.84
479	159.02
484	166.50
489	174.30
494	182.43
499	190.90
504	199.73
509	208.94
514	218.54
519	228.54
524	239.05
529	249.99
534	261.38
539	273.24
544	285.58
549	298.41
554	311.74
559	325.59
564	339.97
569	354.90
574	370.40
579	386.49
584	403.19
589	420.62
594	438.79
599	457.64
604	477.19
609	497.46
614	518.48
619	540.27
624	562.86
629	586.28
634	610.56
639	635.73
644	661.82
649	688.86
654	716.88
659	745.91
664	775.99
669	807.16
674	839.45
679	872.90
684	907.54
689	943.40
694	980.52
699	1018.94
704	1058.70
709	1100.85
714	1144.43
719	1189.58
724	1236.34
729	1284.75
734	1334.85
739	1386.68
744	1440.28
749	1495.69
754	1552.95
759	1612.11
764	1673.22
769	1735.34
774	1799.52
779	1865.82
784	1934.30
789	2005.03
794	2078.07
799	2153.48
804	2231.33
809	2311.69
814	2394.63
819	2480.22
824	2568.53
829	2659.64
834	2753.62
839	2850.56
844	2950.54
849	3053.66
854	3159.99
859	3269.64
864	3382.70
869	3500.28
874	3621.50
879	3745.48
884	3873.25
889	4004.85
894	4140.38
899	4279.90
904	4423.55
909	4571.39
914	4723.57
919	4879.15
924	5039.28
929	5203.02
934	5370.43
939	5541.58
944	5716.54
949	5895.38
954	6078.17
959	6265.00
964	6455.95
969	6651.10
974	6850.54
979	7054.37
984	7262.68
989	7475.57
994	7693.04
999	7915.19

**FLOOR PLAN SCALE: 1/4" = 1' - 0"**

### NOTES:

1. THIS STRUCTURE IS DESIGNED TO WITHSTAND NO. 30 WINDS PER THE 2001 FLOOR BUILDING CODE CHAPTER 16 (SEE ASCE 7-98)
2. WIND IMPORTANCE FACTOR - I (SEE ASCE 7-98 TABLE 6-1, PG 20)
3. WIND EXPOSURE - ALL SIDES - I (SEE ASCE 7-98 TABLE 6-1, PG 20)
4. WIND DIRECTION - ALL SIDES - I (SEE ASCE 7-98 TABLE 6-1, PG 20)
5. WIND PRESSURE - ALL SIDES - I (SEE ASCE 7-98 TABLE 6-1, PG 20)
6. WIND FORCE PER SQUARE FOOT - ALL SIDES - I (SEE ASCE 7-98 TABLE 6-1, PG 20)
7. WIND FORCE PER SQUARE FOOT - ALL SIDES - I (SEE ASCE 7-98 TABLE 6-1, PG 20)
8. WIND FORCE PER SQUARE FOOT - ALL SIDES - I (SEE ASCE 7-98 TABLE 6-1, PG 20)
9. WIND FORCE PER SQUARE FOOT - ALL SIDES - I (SEE ASCE 7-98 TABLE 6-1, PG 20)
10. WIND FORCE PER SQUARE FOOT - ALL SIDES - I (SEE ASCE 7-98 TABLE 6-1, PG 20)
11. WIND FORCE PER SQUARE FOOT - ALL SIDES - I (SEE ASCE 7-98 TABLE 6-1, PG 20)
12. WIND FORCE PER SQUARE FOOT - ALL SIDES - I (SEE ASCE 7-98 TABLE 6-1, PG 20)
13. WIND FORCE PER SQUARE FOOT - ALL SIDES - I (SEE ASCE 7-98 TABLE 6-1, PG 20)
14. WIND FORCE PER SQUARE FOOT - ALL SIDES - I (SEE ASCE 7-98 TABLE 6-1, PG 20)
15. WIND FORCE PER SQUARE FOOT - ALL SIDES - I (SEE ASCE 7-98 TABLE 6-1, PG 20)
16. WIND FORCE PER SQUARE FOOT - ALL SIDES - I (SEE ASCE 7-98 TABLE 6-1, PG 20)
17. WIND FORCE PER SQUARE FOOT - ALL SIDES - I (SEE ASCE 7-98 TABLE 6-1, PG 20)
18. WIND FORCE PER SQUARE FOOT - ALL SIDES - I (SEE ASCE 7-98 TABLE 6-1, PG 20)
19. WIND FORCE PER SQUARE FOOT - ALL SIDES - I (SEE ASCE 7-98 TABLE 6-1, PG 20)
20. WIND FORCE PER SQUARE FOOT - ALL SIDES - I (SEE ASCE 7-98 TABLE 6-1, PG 20)
21. WIND FORCE PER SQUARE FOOT - ALL SIDES - I (SEE ASCE 7-98 TABLE 6-1, PG 20)
22. WIND FORCE PER SQUARE FOOT - ALL SIDES - I (SEE ASCE 7-98 TABLE 6-1, PG 20)
23. WIND FORCE PER SQUARE FOOT - ALL SIDES - I (SEE ASCE 7-98 TABLE 6-1, PG 20)
24. WIND FORCE PER SQUARE FOOT - ALL SIDES - I (SEE ASCE 7-98 TABLE 6-1, PG 20)
25. WIND FORCE PER SQUARE FOOT - ALL SIDES - I (SEE ASCE 7-98 TABLE 6-1, PG 20)
26. WIND FORCE PER SQUARE FOOT - ALL SIDES - I (SEE ASCE 7-98 TABLE 6-1, PG 20)
27. WIND FORCE PER SQUARE FOOT - ALL SIDES - I (SEE ASCE 7-98 TABLE 6-1, PG 20)
28. WIND FORCE PER SQUARE FOOT - ALL SIDES - I (SEE ASCE 7-98 TABLE 6-1, PG 20)
29. WIND FORCE PER SQUARE FOOT - ALL SIDES - I (SEE ASCE 7-98 TABLE 6-1, PG 20)
30. WIND FORCE PER SQUARE FOOT - ALL SIDES - I (SEE ASCE 7-98 TABLE 6-1, PG 20)
31. WIND FORCE PER SQUARE FOOT - ALL SIDES - I (SEE ASCE 7-98 TABLE 6-1, PG 20)
32. WIND FORCE PER SQUARE FOOT - ALL SIDES - I (SEE ASCE 7-98 TABLE 6-1, PG 20)
33. WIND FORCE PER SQUARE FOOT - ALL SIDES - I (SEE ASCE 7-98 TABLE 6-1, PG 20)
34. WIND FORCE PER SQUARE FOOT - ALL SIDES - I (SEE ASCE 7-98 TABLE 6-1, PG 20)
35. WIND FORCE PER SQUARE FOOT - ALL SIDES - I (SEE ASCE 7-98 TABLE 6-1, PG 20)
36. WIND FORCE PER SQUARE FOOT - ALL SIDES - I (SEE ASCE 7-98 TABLE 6-1, PG 20)
37. WIND FORCE PER SQUARE FOOT - ALL SIDES - I (SEE ASCE 7-98 TABLE 6-1, PG 20)
38. WIND FORCE PER SQUARE FOOT - ALL SIDES - I (SEE ASCE 7-98 TABLE 6-1, PG 20)
39. WIND FORCE PER SQUARE FOOT - ALL SIDES - I (SEE ASCE 7-98 TABLE 6-1, PG 20)
40. WIND FORCE PER SQUARE FOOT - ALL SIDES - I (SEE ASCE 7-98 TABLE 6-1, PG 20)
41. WIND FORCE PER SQUARE FOOT - ALL SIDES - I (SEE ASCE 7-98 TABLE 6-1, PG 20)
42. WIND FORCE PER SQUARE FOOT - ALL SIDES - I (SEE ASCE 7-98 TABLE 6-1, PG 20)
43. WIND FORCE PER SQUARE FOOT - ALL SIDES - I (SEE ASCE 7-98 TABLE 6-1, PG 20)
44. WIND FORCE PER SQUARE FOOT - ALL SIDES - I (SEE ASCE 7-98 TABLE 6-1, PG 20)
45. WIND FORCE PER SQUARE FOOT - ALL SIDES - I (SEE ASCE 7-98 TABLE 6-1, PG 20)
46. WIND FORCE PER SQUARE FOOT - ALL SIDES - I (SEE ASCE 7-98 TABLE 6-1, PG 20)
47. WIND FORCE PER SQUARE FOOT - ALL SIDES - I (SEE ASCE 7-98 TABLE 6-1, PG 20)
48. WIND FORCE PER SQUARE FOOT - ALL SIDES - I (SEE ASCE 7-98 TABLE 6-1, PG 20)
49. WIND FORCE PER SQUARE FOOT - ALL SIDES - I (SEE ASCE 7-98 TABLE 6-1, PG 20)
50. WIND FORCE PER SQUARE FOOT - ALL SIDES - I (SEE ASCE 7-98 TABLE 6-1, PG 20)
51. WIND FORCE PER SQUARE FOOT - ALL SIDES - I (SEE ASCE 7-98 TABLE 6-1, PG 20)
52. WIND FORCE PER SQUARE FOOT - ALL SIDES - I (SEE ASCE 7-98 TABLE 6-1, PG 20)
53. WIND FORCE PER SQUARE FOOT - ALL SIDES - I (SEE ASCE 7-98 TABLE 6-1, PG 20)
54. WIND FORCE PER SQUARE FOOT - ALL SIDES - I (SEE ASCE 7-98 TABLE 6-1, PG 20)
55. WIND FORCE PER SQUARE FOOT - ALL SIDES - I (SEE ASCE 7-98 TABLE 6-1, PG 20)
56. WIND FORCE PER SQUARE FOOT - ALL SIDES - I (SEE ASCE 7-98 TABLE 6-1, PG 20)
57. WIND FORCE PER SQUARE FOOT - ALL SIDES - I (SEE ASCE 7-98 TABLE 6-1, PG 20)
58. WIND FORCE PER SQUARE FOOT - ALL SIDES - I (SEE ASCE 7-98 TABLE 6-1, PG 20)
59. WIND FORCE PER SQUARE FOOT - ALL SIDES - I (SEE ASCE 7-98 TABLE 6-1, PG 20)
60. WIND FORCE PER SQUARE FOOT - ALL SIDES - I (SEE ASCE 7-98 TABLE 6-1, PG 20)
61. WIND FORCE PER SQUARE FOOT - ALL SIDES - I (SEE ASCE 7-98 TABLE 6-1, PG 20)
62. WIND FORCE PER SQUARE FOOT - ALL SIDES - I (SEE ASCE 7-98 TABLE 6-1, PG 20)
63. WIND FORCE PER SQUARE FOOT - ALL SIDES - I (SEE ASCE 7-98 TABLE 6-1, PG 20)
64. WIND FORCE PER SQUARE FOOT - ALL SIDES - I (SEE ASCE 7-98 TABLE 6-1, PG 20)
65. WIND FORCE PER SQUARE FOOT - ALL SIDES - I (SEE ASCE 7-98 TABLE 6-1, PG 20)
66. WIND FORCE PER SQUARE FOOT - ALL SIDES - I (SEE ASCE 7-98 TABLE 6-1, PG 20)
67. WIND FORCE PER SQUARE FOOT - ALL SIDES - I (SEE ASCE 7-98 TABLE 6-1, PG 20)
68. WIND FORCE PER SQUARE FOOT - ALL SIDES - I (SEE ASCE 7-98 TABLE 6-1, PG 20)
69. WIND FORCE PER SQUARE FOOT - ALL SIDES - I (SEE ASCE 7-98 TABLE 6-1, PG 20)
70. WIND FORCE PER SQUARE FOOT - ALL SIDES - I (SEE ASCE 7-98 TABLE 6-1, PG 20)
71. WIND FORCE PER SQUARE FOOT - ALL SIDES - I (SEE ASCE 7-98 TABLE 6-1, PG 20)
72. WIND FORCE PER SQUARE FOOT - ALL SIDES - I (SEE ASCE 7-98 TABLE 6-1, PG 20)
73. WIND FORCE PER SQUARE FOOT - ALL SIDES - I (SEE ASCE 7-98 TABLE 6-1, PG 20)
74. WIND FORCE PER SQUARE FOOT - ALL SIDES - I (SEE ASCE 7-98 TABLE 6-1, PG 20)
75. WIND FORCE PER SQUARE FOOT - ALL SIDES - I (SEE ASCE 7-98 TABLE 6-1, PG 20)
76. WIND FORCE PER SQUARE FOOT - ALL SIDES - I (SEE ASCE 7-98 TABLE 6-1, PG 20)
77. WIND FORCE PER SQUARE FOOT - ALL SIDES - I (SEE ASCE 7-98 TABLE 6-1, PG 20)
78. WIND FORCE PER SQUARE FOOT - ALL SIDES - I (SEE ASCE 7-98 TABLE 6-1, PG 20)
79. WIND FORCE PER SQUARE FOOT - ALL SIDES - I (SEE ASCE 7-98 TABLE 6-1, PG 20)
80. WIND FORCE PER SQUARE FOOT - ALL SIDES - I (SEE ASCE 7-98 TABLE 6-1, PG 20)
81. WIND FORCE PER SQUARE FOOT - ALL SIDES - I (SEE ASCE 7-98 TABLE 6-1, PG 20)
82. WIND FORCE PER SQUARE FOOT - ALL SIDES - I (SEE ASCE 7-98 TABLE 6-1, PG 20)
83. WIND FORCE PER SQUARE FOOT - ALL SIDES - I (SEE ASCE 7-98 TABLE 6-1, PG 20)
84. WIND FORCE PER SQUARE FOOT - ALL SIDES - I (SEE ASCE 7-98 TABLE 6-1, PG 20)
85. WIND FORCE PER SQUARE FOOT - ALL SIDES - I (SEE ASCE 7-98 TABLE 6-1, PG 20)
86. WIND FORCE PER SQUARE FOOT - ALL SIDES - I (SEE ASCE 7-98 TABLE 6-1, PG 20)
87. WIND FORCE PER SQUARE FOOT - ALL SIDES - I (SEE ASCE 7-98 TABLE 6-1, PG 20)
88. WIND FORCE PER SQUARE FOOT - ALL SIDES - I (SEE ASCE 7-98 TABLE 6-1, PG 20)
89. WIND FORCE PER SQUARE FOOT - ALL SIDES - I (SEE ASCE 7-98 TABLE 6-1, PG 20)
90. WIND FORCE PER SQUARE FOOT - ALL SIDES - I (SEE ASCE 7-98 TABLE 6-1, PG 20)
91. WIND FORCE PER SQUARE FOOT - ALL SIDES - I (SEE ASCE 7-98 TABLE 6-1, PG 20)
92. WIND FORCE PER SQUARE FOOT - ALL SIDES - I (SEE ASCE 7-98 TABLE 6-1, PG 20)
93. WIND FORCE PER SQUARE FOOT - ALL SIDES - I (SEE ASCE 7-98 TABLE 6-1, PG 20)
94. WIND FORCE PER SQUARE FOOT - ALL SIDES - I (SEE ASCE 7-98 TABLE 6-1, PG 20)
95. WIND FORCE PER SQUARE FOOT - ALL SIDES - I (SEE ASCE 7-98 TABLE 6-1, PG 20)
96. WIND FORCE PER SQUARE FOOT - ALL SIDES - I (SEE ASCE 7-98 TABLE 6-1, PG 20)
97. WIND FORCE PER SQUARE FOOT - ALL SIDES - I (SEE ASCE 7-98 TABLE 6-1, PG 20)
98. WIND FORCE PER SQUARE FOOT - ALL SIDES - I (SEE ASCE 7-98 TABLE 6-1, PG 20)
99. WIND FORCE PER SQUARE FOOT - ALL SIDES - I (SEE ASCE 7-98 TABLE 6-1, PG 20)
100. WIND FORCE PER SQUARE FOOT - ALL SIDES - I (SEE ASCE 7-98 TABLE 6-1, PG 20)



**MCD INC.**  
 DESIGN CONSULTING & DESIGN, INC.  
 6001 ALBERTA PARKWAY SUITE 100  
 FORT COLLINS, CO 80526  
 PHONE (970) 221-7907  
 ROBERT M. KORTZ, P.E.  
 FOUNDED 1988, INC. 1997