



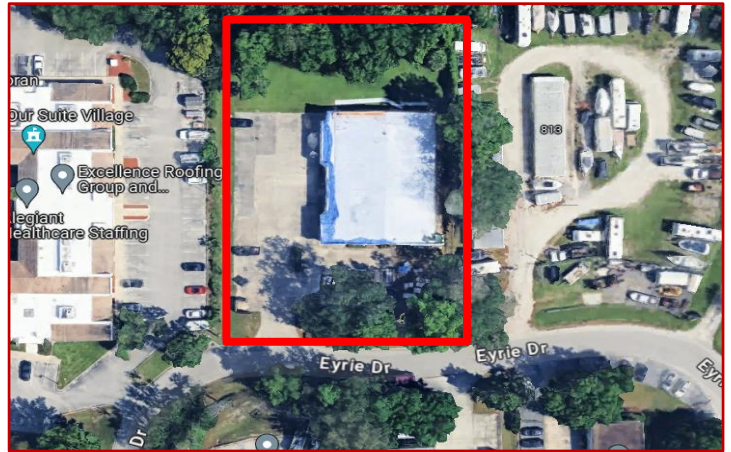
C. Brenner, Inc.

3586 Aloma Ave Suite 5
Winter Park, FL 32792
Phone: (407) 677-1700

COMMERCIAL REAL ESTATE

Office/Warehouse on Oversized Lot \$1,499,000

815 Eyrie Dr,
Oviedo, FL 32765



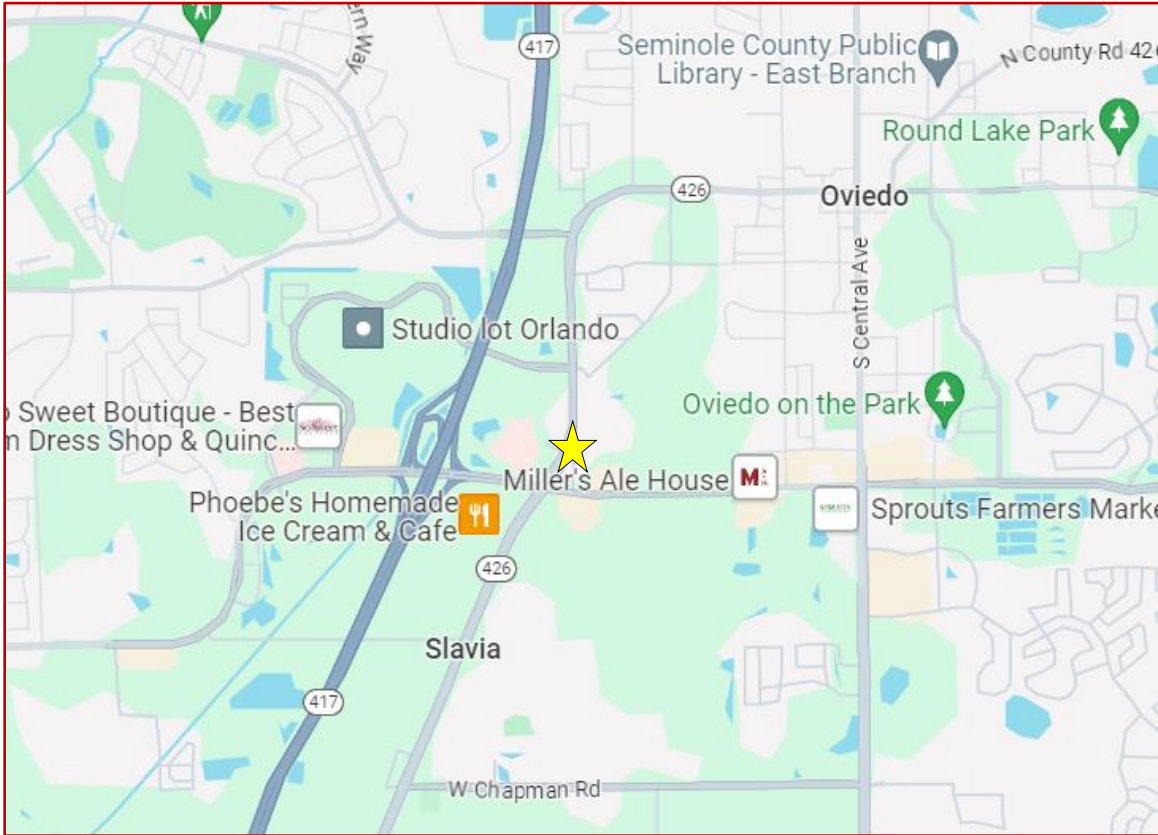
- 7,000 SF office/warehouse on 1.06 acre site
- Space is fully built as air-conditioned office, but can be reverted to warehouse
- Separated into four individual office units, appx. 1,750SF each
- Ample space for parking and outdoor storage
- Directly off SR 426, near ramp to HWY 417
- 10-12' clear height
- I-2 zoning allows for flexible industrial or office uses
- New roof 2023

Ben Brenner
Lic. RE Broker
C. Brenner Inc.

Cell: 407-970-6447
Office: 407-677-1700
Email: bbrenner@cbrenner.com

Expect Results with C Brenner Inc!
www.cbrenner.com





Expect Results with C Brenner Inc!
www.cbrenner.com